

* PLANS ARE INDICATIVE AND MAY BE SUBJECT TO CHANGE

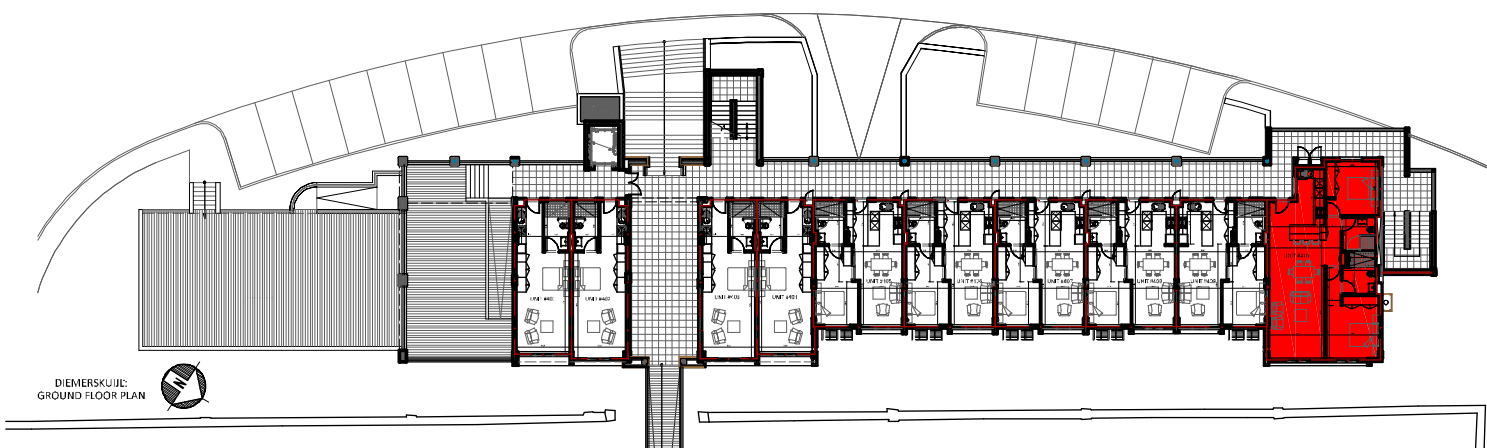
DIEMERSKUIJL - UNIT 410

2-BEDROOM APARTMENT

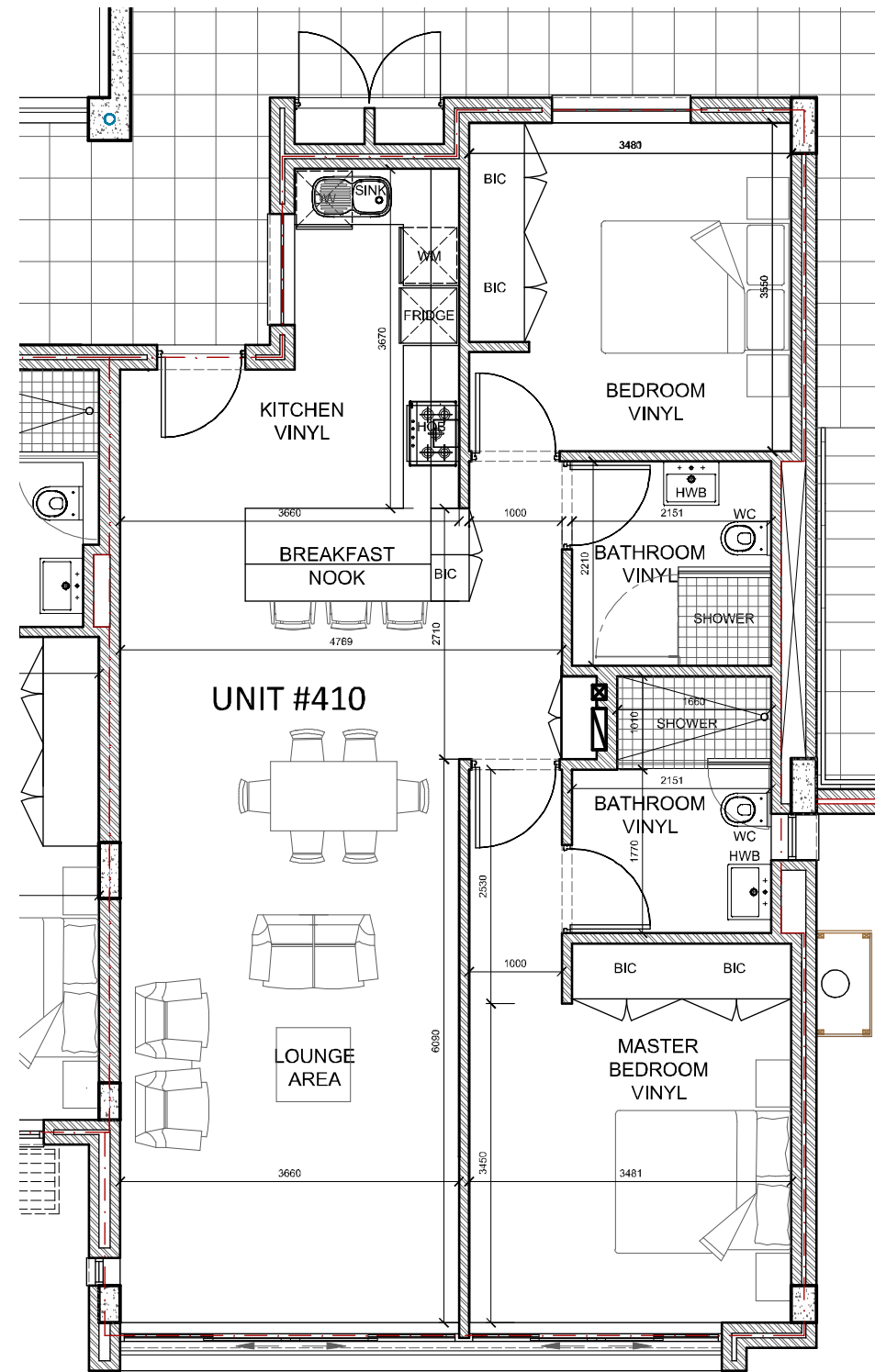
TYPICAL UNIT SIZE (Sectional title area): 92.25m²

TYPICAL STOEP SIZE (Sectional title area): 0m²

PARKING BAY PD 001



LOCALITY - GROUND FLOOR
SCALE 1:500



GROUND FLOOR - UNIT 410
SCALE 1:75

ALL STATUTORY REQUIREMENTS (NATIONAL BUILDING REGULATIONS AND MUNICIPAL BY-LAWS) MUST BE ADHERED TO • CONTRACTORS ARE TO CHECK AND VERIFY ALL DIMENSIONS AND LEVELS ON THE BUILDING SITE BEFORE WORK COMMENCES • FIGURED DIMENSIONS AND LARGE SCALE DETAIL TAKES PREFERENCE OVER SCALED DIMENSIONS • REFER ANY AND ALL CONFLICTING INFORMATION TO THE ARCHITECT AND OTHER RESPONSIBLE CONSULTANTS THE DESIGN AND DETAIL ON THIS DRAWING IS THE PROPERTY OF TV3 ARCHITECTS AND TOWNPLANNERS (PTY) LTD, AND COPYRIGHT IS RESERVED.

DRAWING STATUS CODES:

A: Design • B: Marketing • C: Municipal • D: Tender • E: Construction • F: As Built

PROJECT DESCRIPTION:

Proposed new retirement estate
ARUN Properties
Remainder of Farm 1511 Baronetcy
DRAWING DESCRIPTION:

APARTMENT BUILDING A5 - UNIT 410



First Floor • La Gratitude Office Building
97 Dorp Street • Stellenbosch 7600
tel (021) 861 3800
fax (021) 882 8025
e-mail: stel@tv3.co.za
web: www.tv3.co.za

DRAWN: AVDW - GJN

CHECKED: Kalla Smit (SACAP 6256)

DATE: 2018-08-29 | SCALE/SHEET SIZE: A3

DRAWING No.: P3517-B-410

P3517-B-410

REVISION:

a