

# ELEVATE YOUR RETIREMENT WITH A PENTHOUSE SUITE

---



|                                  |    |
|----------------------------------|----|
| WHY LIVE AT DE PLATTEKLOOF       | 03 |
| .....                            |    |
| TIJGERZICHT PENTHOUSE COLLECTION | 05 |
| .....                            |    |
| HEALTHCARE SERVICES              | 06 |
| .....                            |    |
| ESTATE SITE PLAN                 | 09 |
| .....                            |    |
| FLOOR PLANS                      | 10 |
| .....                            |    |
| ENQUIRE                          | 18 |
| .....                            |    |







# TIJGERZICHT PENTHOUSE COLLECTION

FROM R5 347 000\*

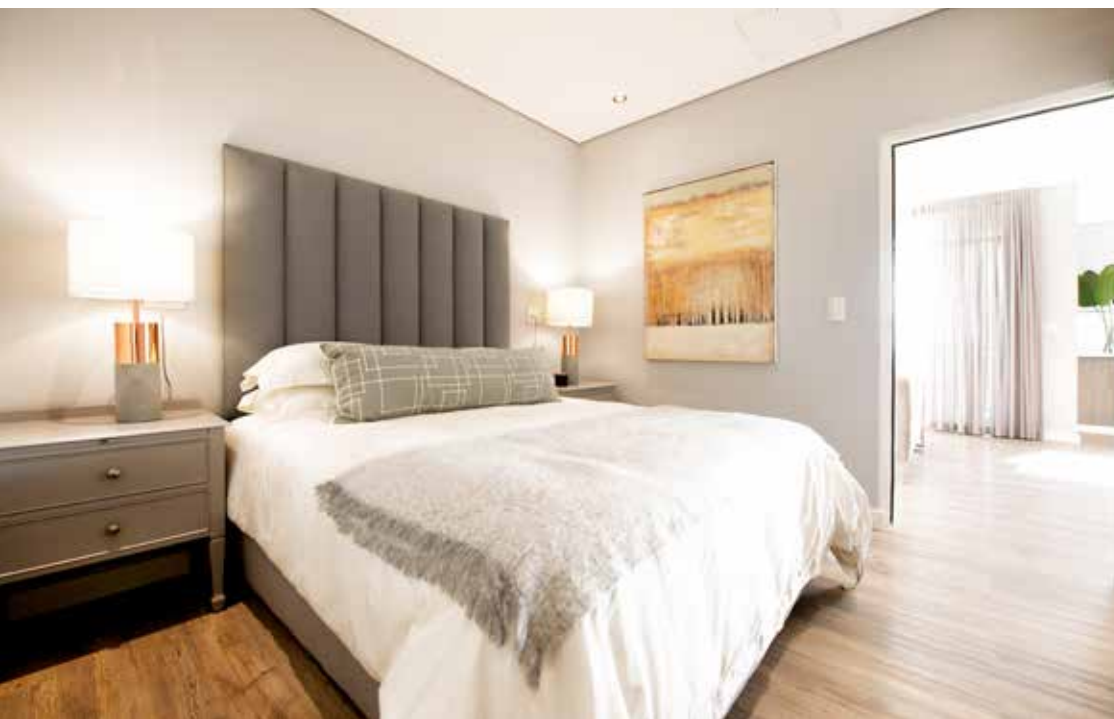
---

2 BEDROOMS

The Tijgerzicht Penthouse Collection at De Platteklouf Lifestyle Estate is a superior selection of penthouse suites within Tijgerzicht, offering retirees unparalleled assisted living.

Various elements, including a spacious design and exceptional features, truly set these suites far above the rest.

\*Incl. Transfer Duty



# ASSISTED LIVING HEALTHCARE SERVICES

INCLUDED IN LEVY

---



## PRIMARY HEALTHCARE SERVICES

---

Initial medical assessment  
prior to occupation & annual  
re-assessment

---

Assistance to obtain / request  
benefits from medical aid

---

The clinic service is  
operational

---

Medical aid claims on behalf  
of the resident for qualifying  
services and procedures  
(if required)

---

Access to 24-hour  
emergency via call system

---

Resident data and information  
stored electronically on  
software unique to Medwell SA

---

One home visit per month  
where resident's mobility  
prevents clinic visit

---

Managed home care  
services available

---

Healthcare provider with  
home nursing practice  
number for medical aid claims

---

Reduced cost for admission  
to care unit

---

## ASSISTED LIVING SERVICES

---

Daily visits by staff (if required)

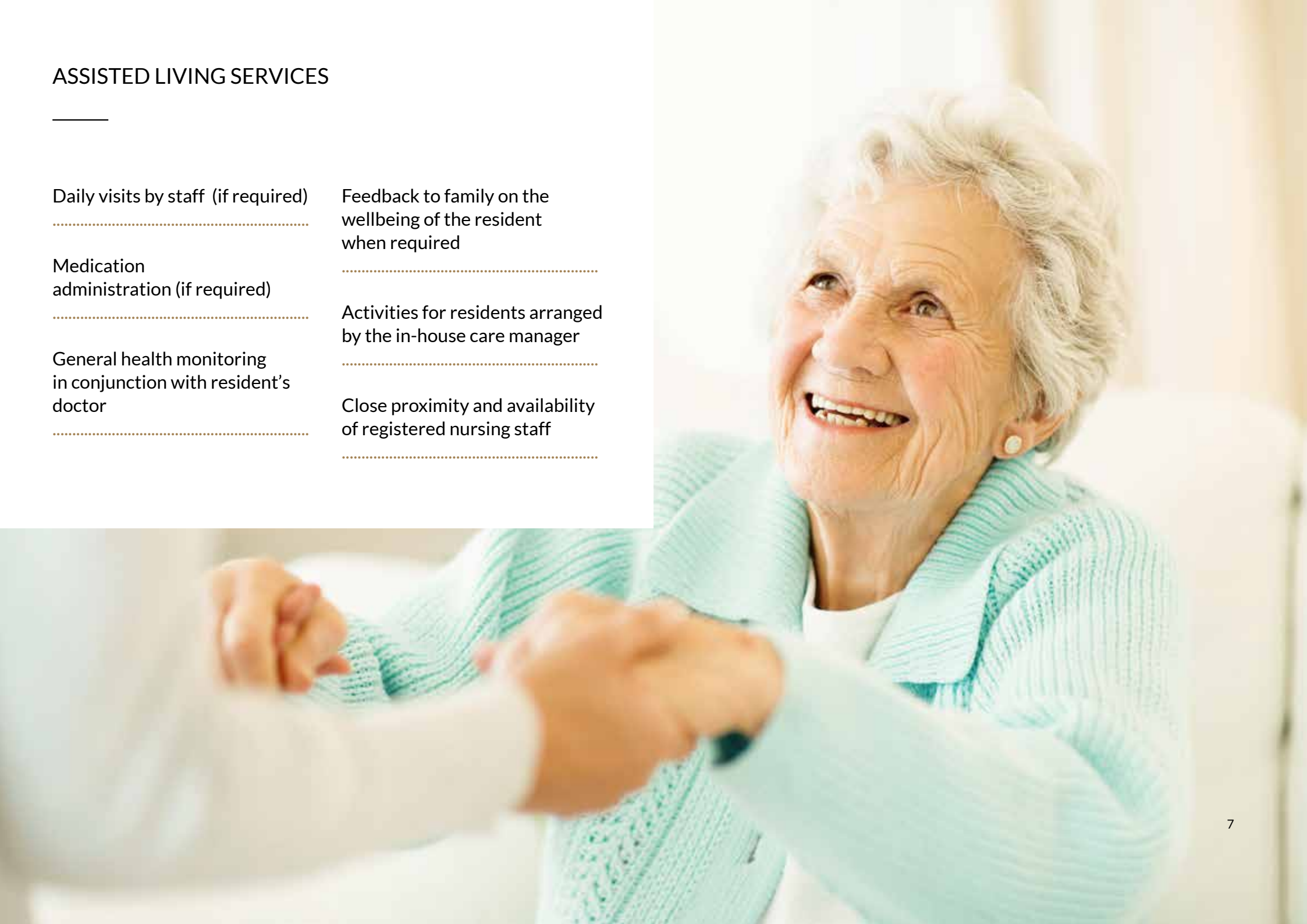
Feedback to family on the wellbeing of the resident when required

Medication administration (if required)

Activities for residents arranged by the in-house care manager

General health monitoring in conjunction with resident's doctor

Close proximity and availability of registered nursing staff



# ASSISTED LIVING HEALTHCARE SERVICES

## OPTIONAL EXTRAS\*

---



## HOME-BASED CARE

---

Frailcare / post-hospitalization care / post-operative care / palliative / terminal care

---

Personal care (assistance with personal hygiene / incontinence care / bath / shower / wash / mouthcare / hair care / nail care / dressing)

---

Nebulisation

---

Wound care procedure at home. When performed at the clinic or care unit, consumables only will be charged.

---

Stoma care procedures

---

Catheter care procedures

---

Performing blood pressure, sugar levels and urine sample procedures

---

Medication administration (order, receive, administer prescription medication)

---

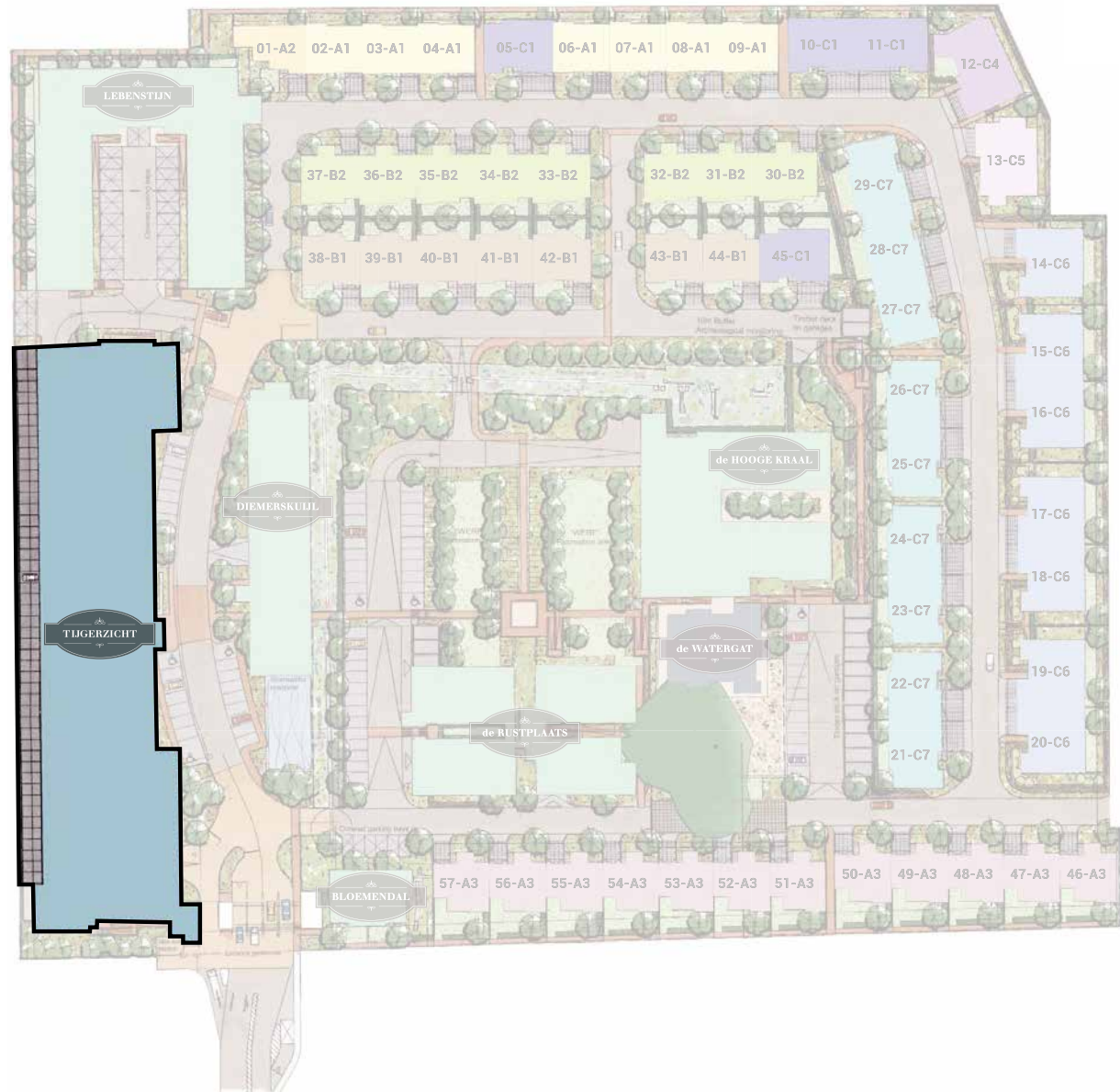
Administration and ordering of blister packaging

---

\*All services over and above the services included as part of the levy is subject to an individual assessment and an agreed care plan.

# ESTATE SITE PLAN

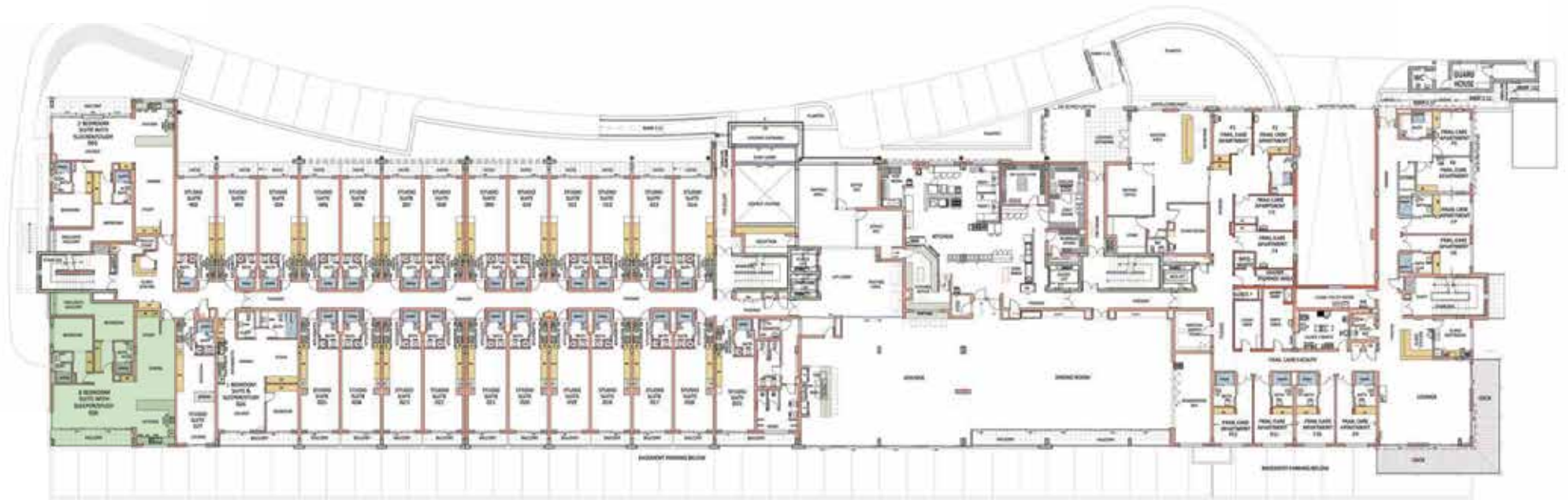
---



# UNIT LAYOUT GROUND FLOOR

---

■ PENTHOUSE SUITE



# UNIT LAYOUT FIRST FLOOR

---

■ PENTHOUSE SUITE



# UNIT LAYOUT SECOND FLOOR

---

■ PENTHOUSE SUITE



# BASEMENT PARKING

---

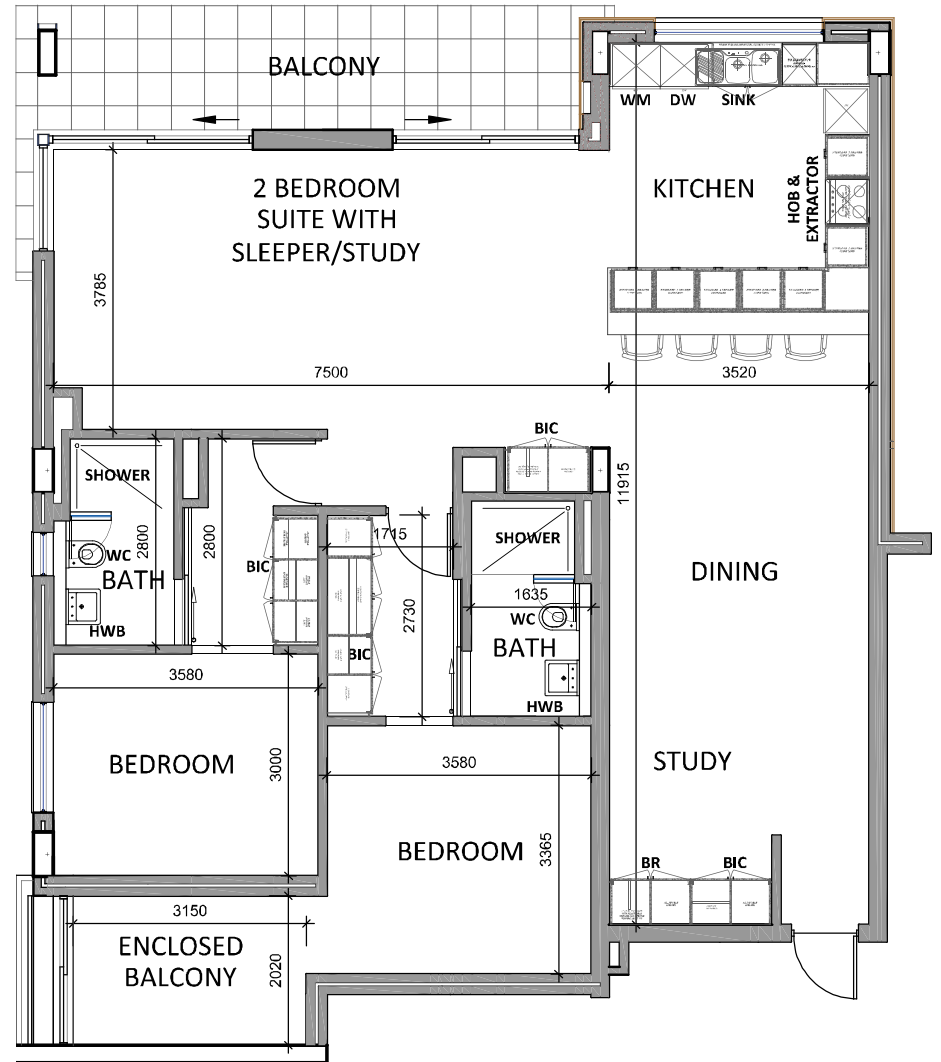


# 2-BEDROOM & SLEEPER/STUDY

TYPICAL UNIT LAYOUT

- Bedrooms: 2
- Bathrooms: 2
- Parking Bay: 1
- Balcony Size: 15.92m<sup>2</sup>

150.41m<sup>2</sup>





## WHY PURCHASE A TIJGERZICHT PENTHOUSE SUITE?

---

New sectional title properties including transfer duty

Exceptional Smeg appliances

Expansive living through large windows

Breath-taking views of the greater Cape Town area and its striking sunsets

Abundance of space and natural flow

A lifestyle that is well-taken care of in every way



RESTAURANT, LOUNGE & BAR AREA



LIBRARY



MANOR HOUSE GARDEN



ON-SITE CARE CENTRE



## GET IN TOUCH WITH OUR SALES TEAM

---



Naomi Grant  
084 687 5823



Dawid Prinsloo  
060 960 0100



Janine Basson  
081 270 2648

**Viewing Times:** Weekdays 10:00 - 17:00, Weekends 14:00 - 17:00 | 55 Olienhout Avenue, Platteklouf 3, Cape Town, 7550

021 814 7000 | [live@deplatteklouf.co.za](mailto:live@deplatteklouf.co.za)



5-STAR LIVING FOR THE OVER 50s

[WWW.DEPLATTEKLOOF.CO.ZA](http://WWW.DEPLATTEKLOOF.CO.ZA)